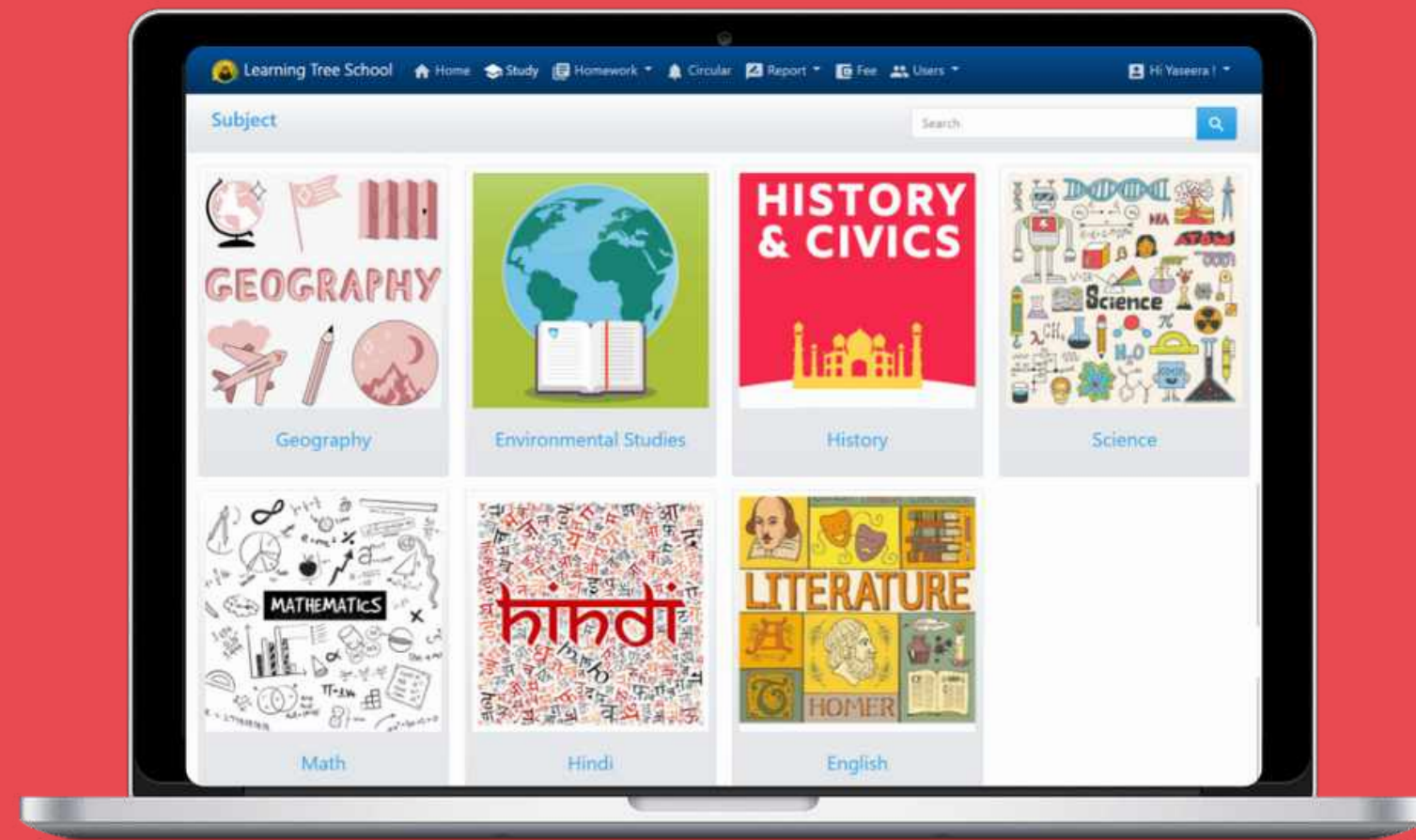


# Is your school ready for the Digital Era?

Edify is a Web-based Learning Management System, developed to digitize your Institution.



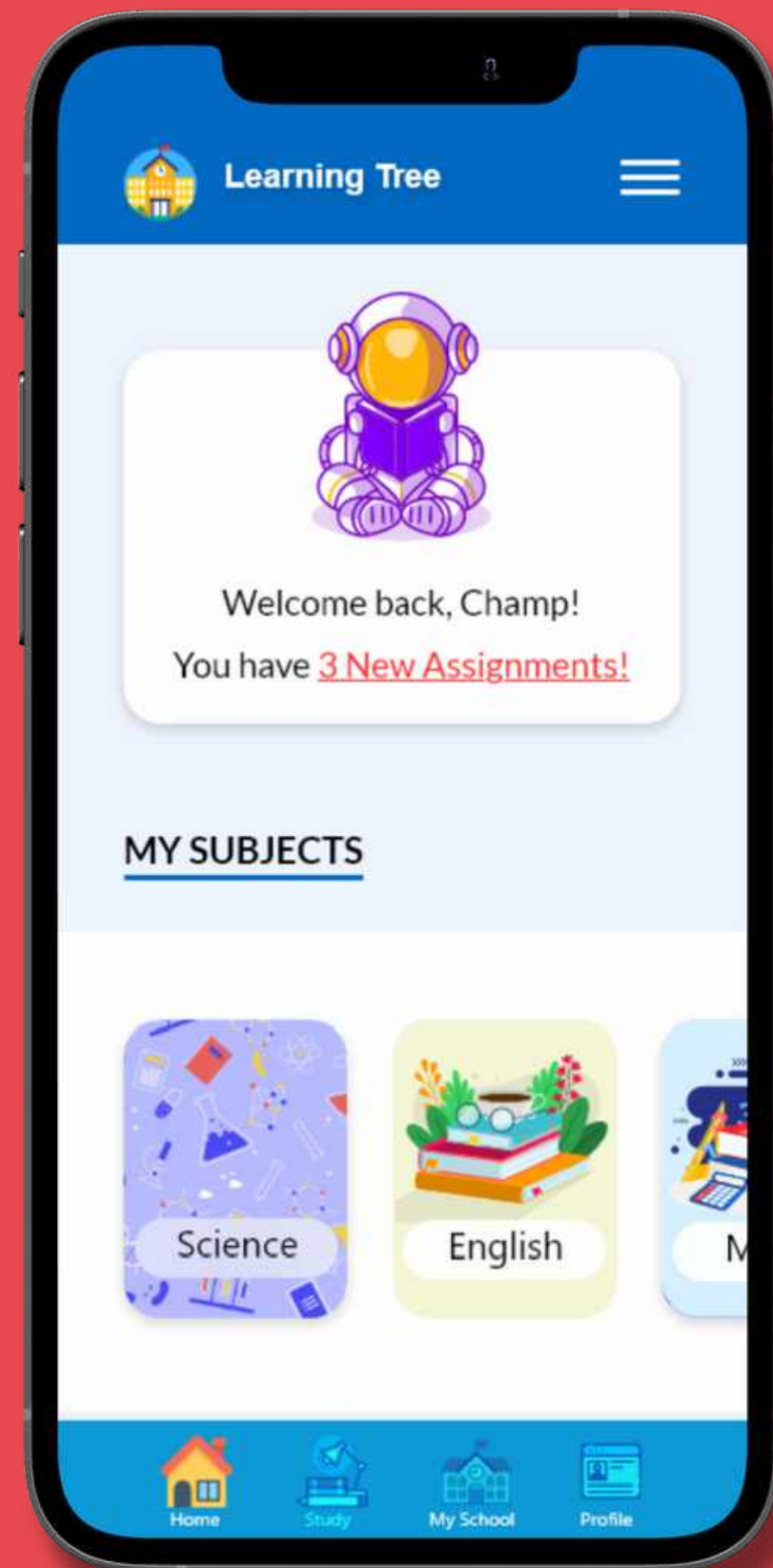
ILMTECH



# Make your school stand out from the rest

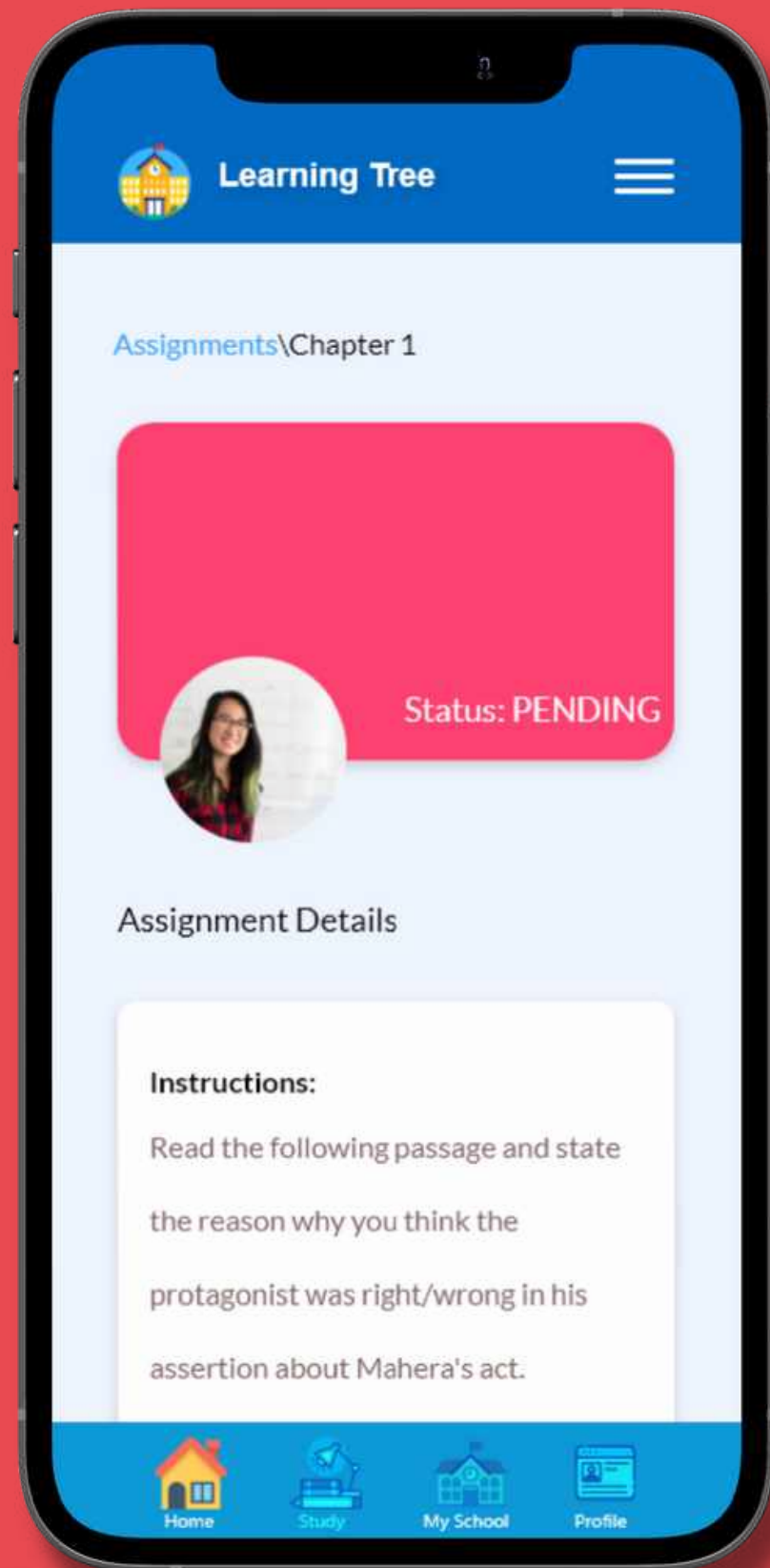
Edify is a web - based learning management system designed to lead your institution in the digital era. Educators can organize and share eLearning content in one location.

It provides users the flexibility to access it from their institution or home. Authorized individuals have 24/7 access to their system, through a unique User ID and Password



# TRANSITION TO REMOTE LEARNING IN A HEARTBEAT





## STUDENTS AND ACADEMY MANAGEMENT

Lead your class with ease, by easily creating and managing batches, uploading course material, and enrolling students.

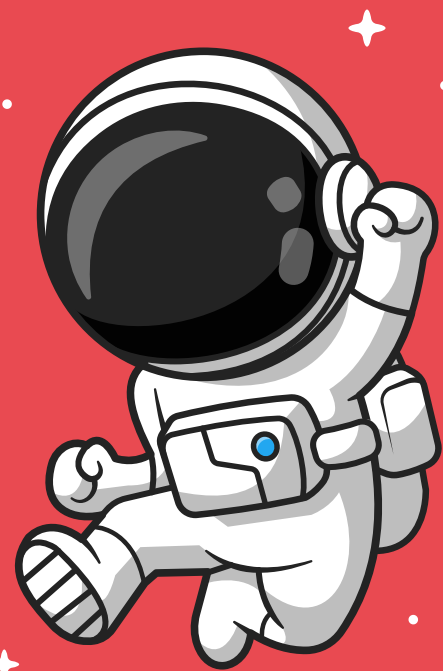
## CREATE COURSES EASILY

Design multimedia-rich courses by sharing videos, PDFs, infographics, animations and PowerPoint presentations.

## CREATE AND GRADE ASSIGNMENTS

We've made authentic assessment easier than ever: Feedback from a teacher for an assignment can be easily shared with the student via Edify.

# MAKE YOUR SCHOOL STAND OUT FROM THE REST

A smartphone displaying the login screen for 'Learning Tree School'. The screen has a blue background with a faint image of a person. At the top, there is a circular logo of a school building. Below the logo, the text 'Learning Tree School' is displayed, followed by the tagline 'A Building With Four Walls And Tomorrow Inside.' There are two input fields: 'Email Address' with an envelope icon and 'Password' with a lock icon. Below these fields is an orange 'LOGIN' button. At the bottom, there is a link for 'Forgot Password?' and a link for 'Don't have an account? Register now'. A disclaimer at the very bottom states 'By signing up, you are agree with our Terms & Conditions'.



## IMAGE IS EVERYTHING

Let Edify embody your institute by using branding elements such: as your own Domain name, Logo, and Banner

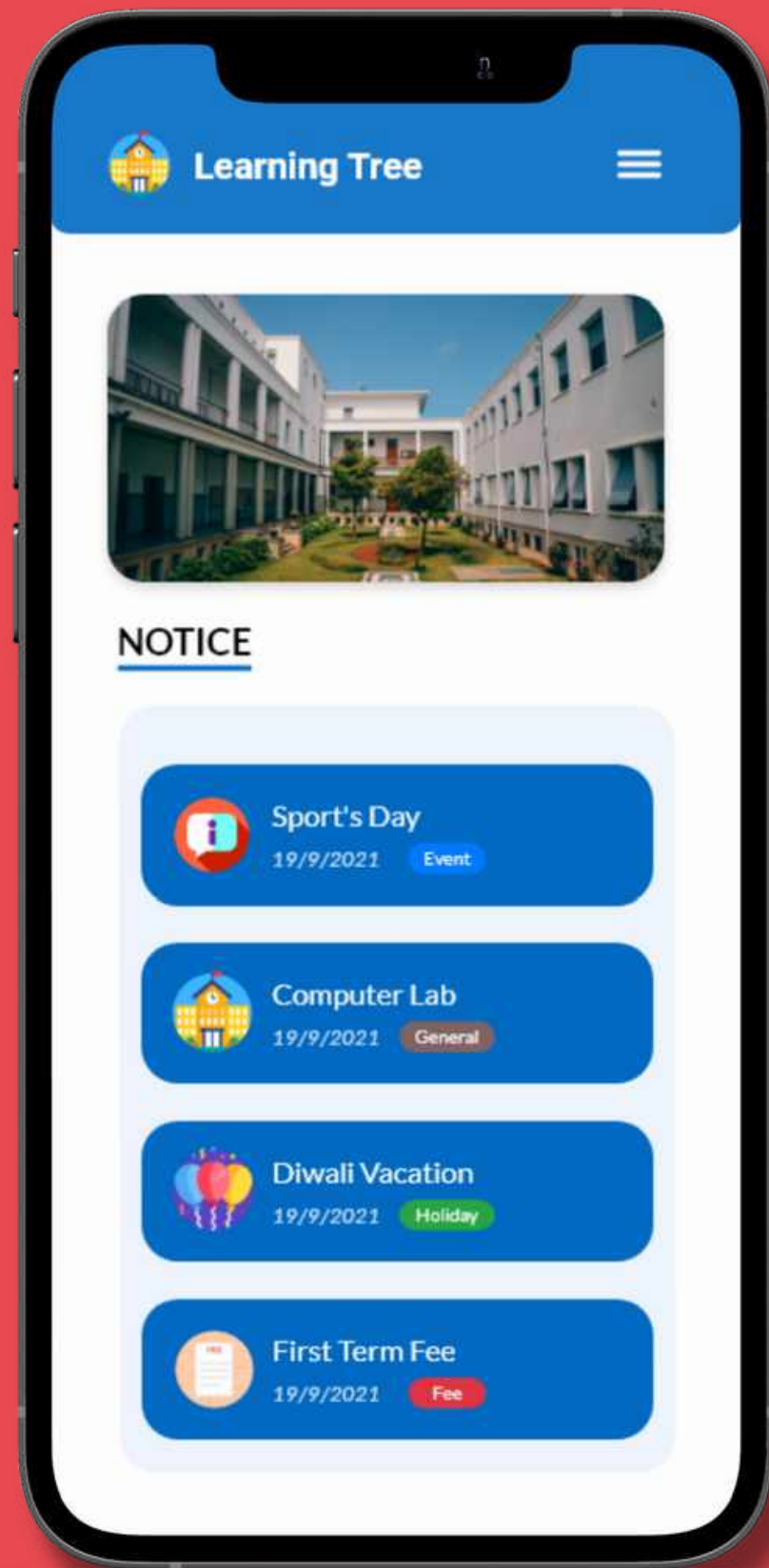
## ADD A HOMEPAGE

Online learners are greeted by a personalized login page that features your branding elements, such as a logo and welcome message.

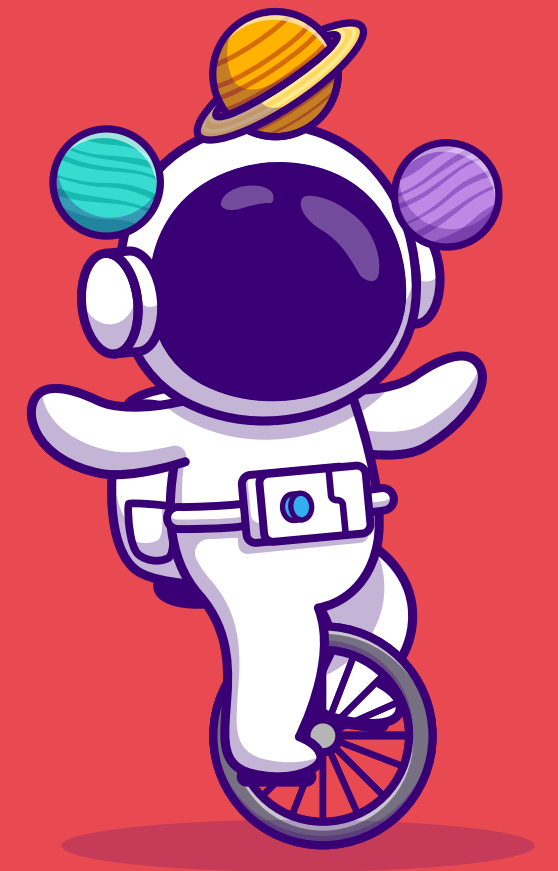
## YOUR SCHOOL, YOUR ADDRESS

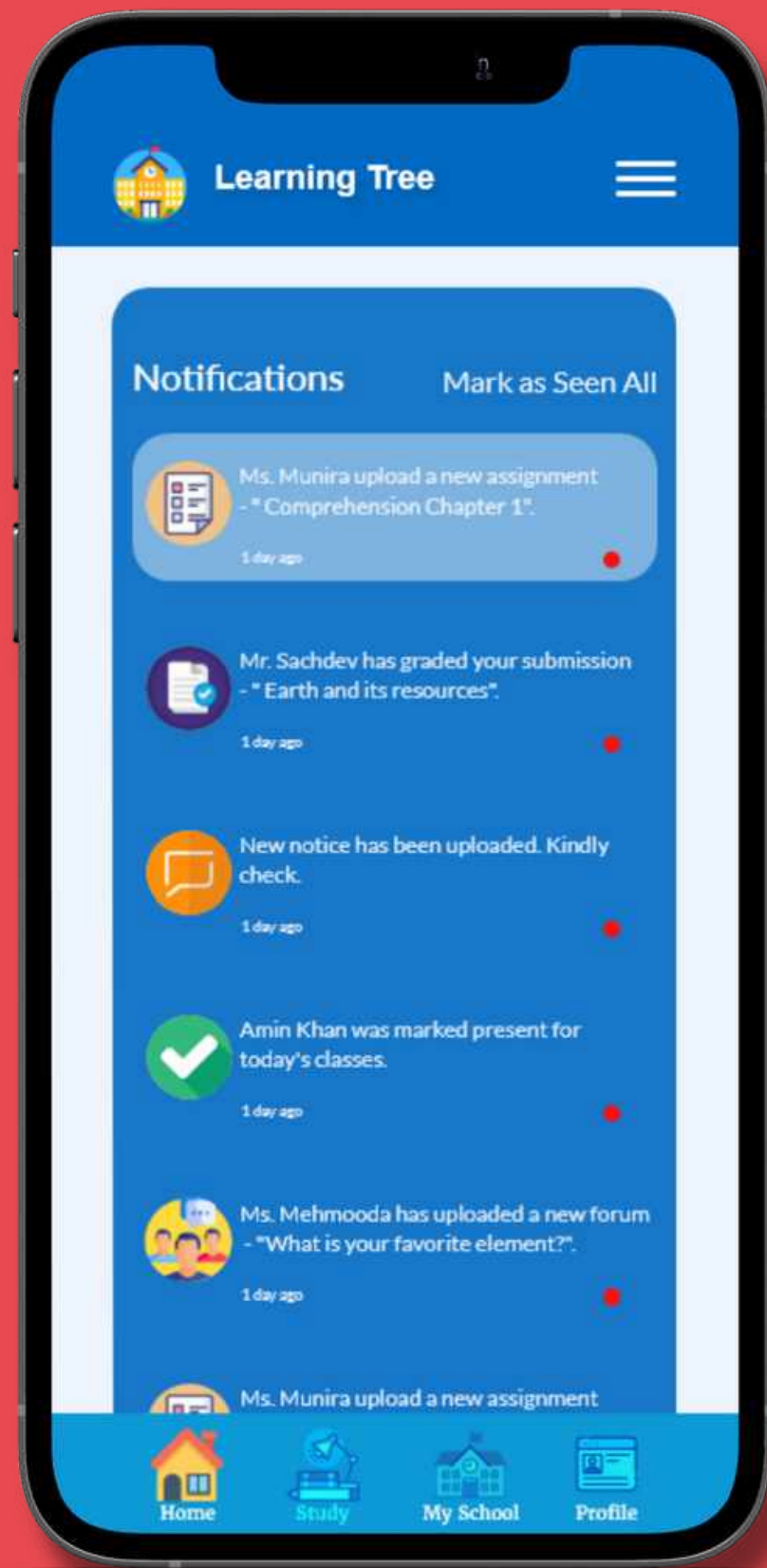
Using Edify, you can get a branded URL with your website name. With this white label URL, you can get an extra level of personalization.





# FOCUS ON THE IMPORTANT, LEAVE THE MUNDANE





## REACH EVERYONE WITH ONE ACCOUNT

No need to spend hours circulating notices to each class! Send event-specific, dynamic-content notifications to users with just a click of a button.

## AUTOMATE TASKS

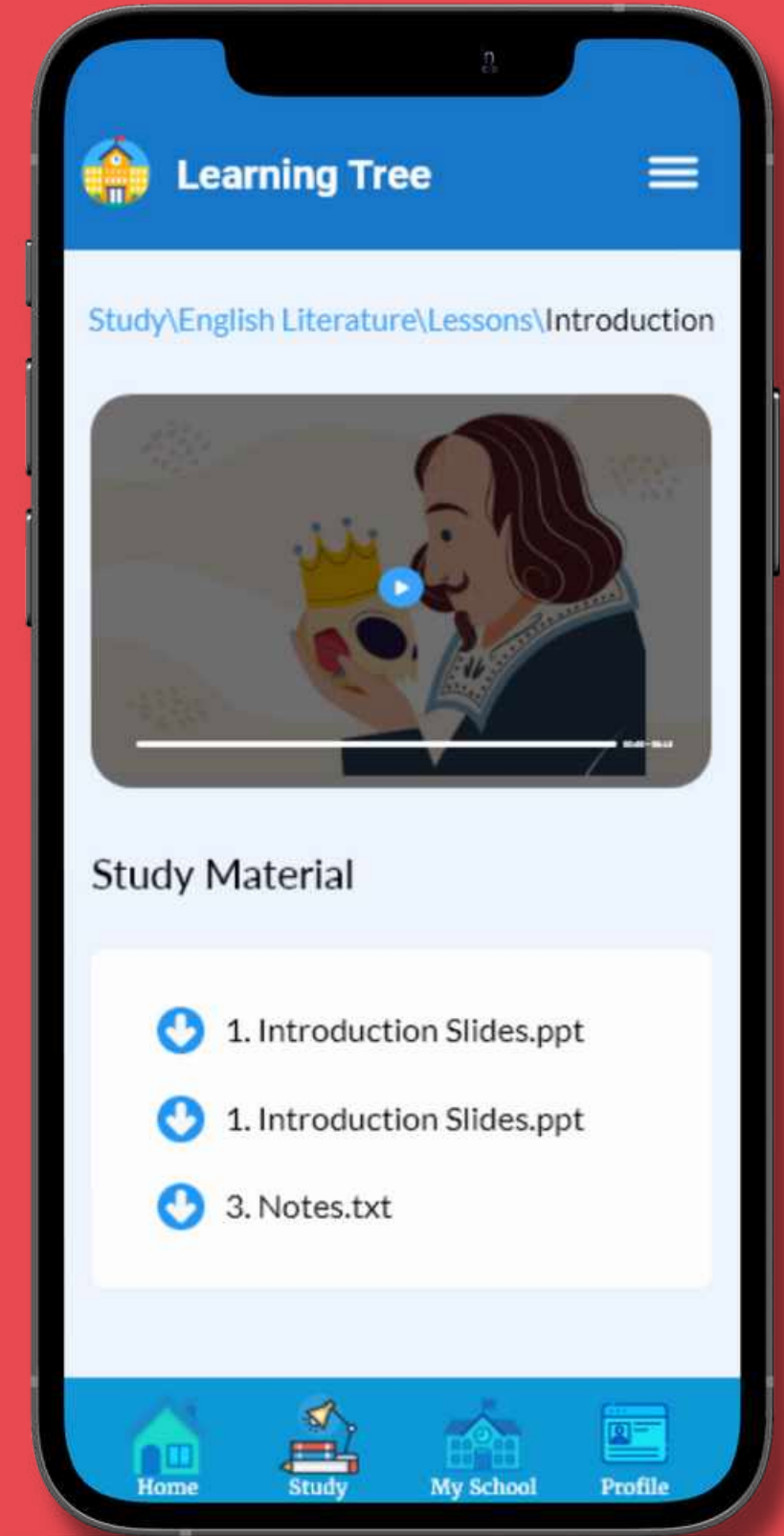
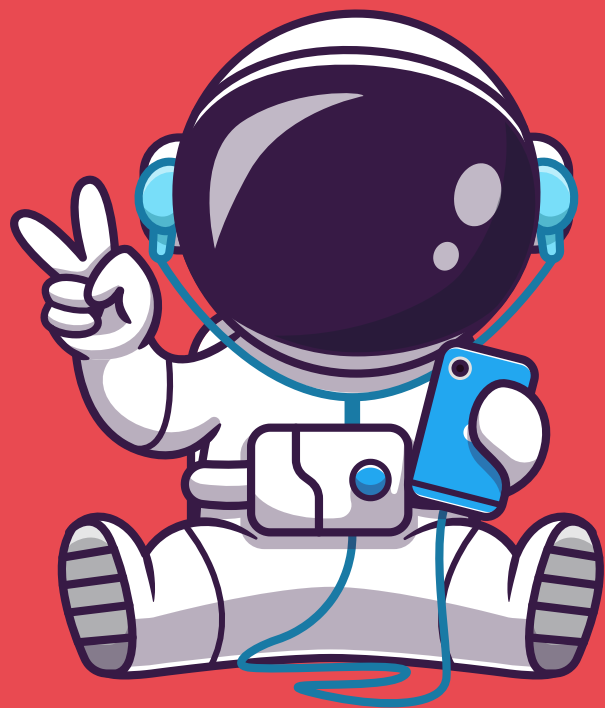
Edify removes repetitive admin tasks allowing you to spend less time micromanaging. Students will automatically receive updates for assignments, fees, and notices.

## KEEP PARENTS HAPPY

Parents and guardians can have access to their child's calendar, class timetable, outline and assessment dates. This creates opportunities for conversation to meaningfully occur outside of class time and parents or guardians can actively engage in their child's learning.



# TECHNOLOGY AS A COMPLEMENT, NOT A REPLACEMENT



## DELIVER ON ANY DEVICE

Now, design and deliver course content that is accessible across different platforms like laptop, mobile, or tablet devices.

## BLENDED MODE

Edify encourages personalization of the eLearning experience by combining the best aspects of in-person teaching with technology-based eLearning methods.

## DESIGNED FOR STUDENTS & TEACHERS

Say goodbye to complicated menus and screens. Edify provides an intuitive user interface: which is easy to use for teachers and students

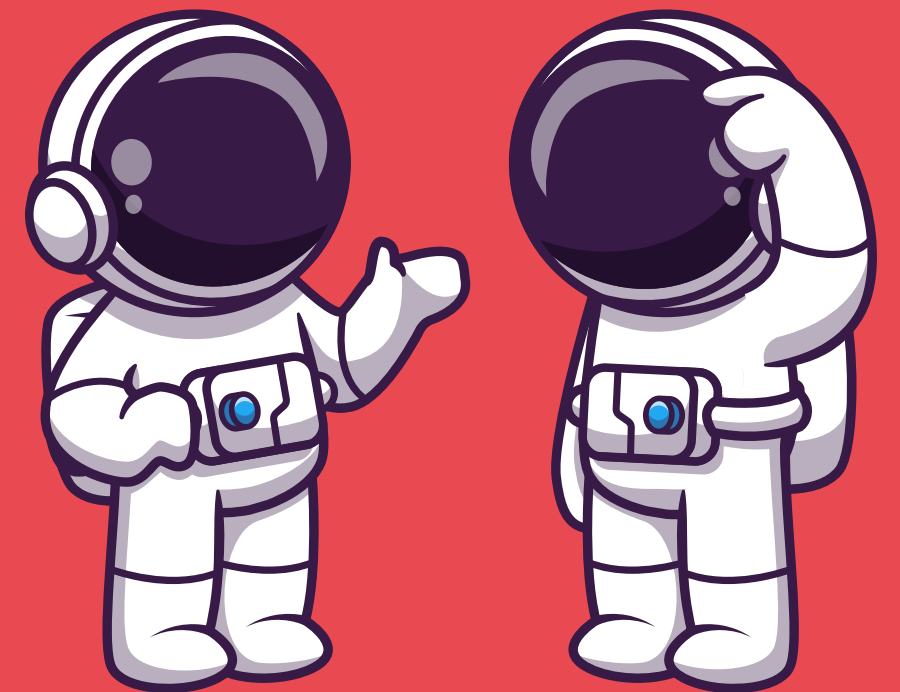


# Not sure whether it's the right solution for you? Why don't you try it for 90 days free?

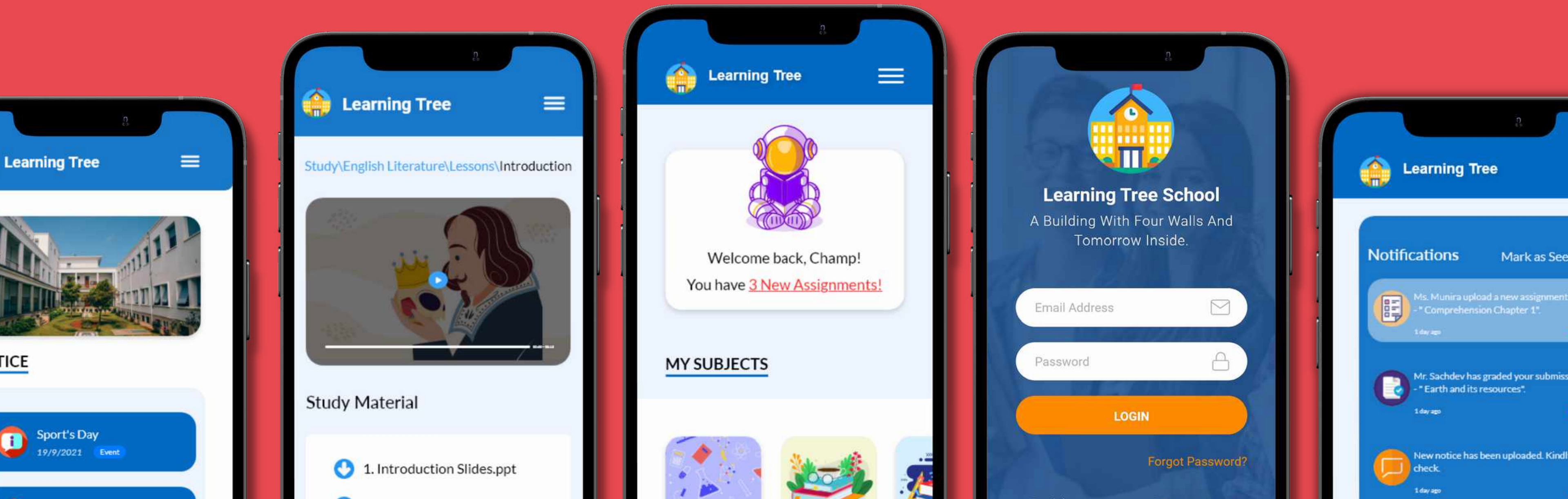
Seeing is believing. Use Edify for 90-days, no costs incurred.  
Schedule a live demo with our team at your convenience.

**Start your  
Free Trial**

or, visit: [www.theilmtech.com/edify](http://www.theilmtech.com/edify)



# BECOME THE TEACHER OF THE NEW ERA





# Who are We?



## ILMTECH

TECHNOLOGY AS A COMPLEMENT, NOT  
REPLACEMENT

Technology in India's educational system is acting more as an alternative delivery mechanism while the process and system of education remain traditional.

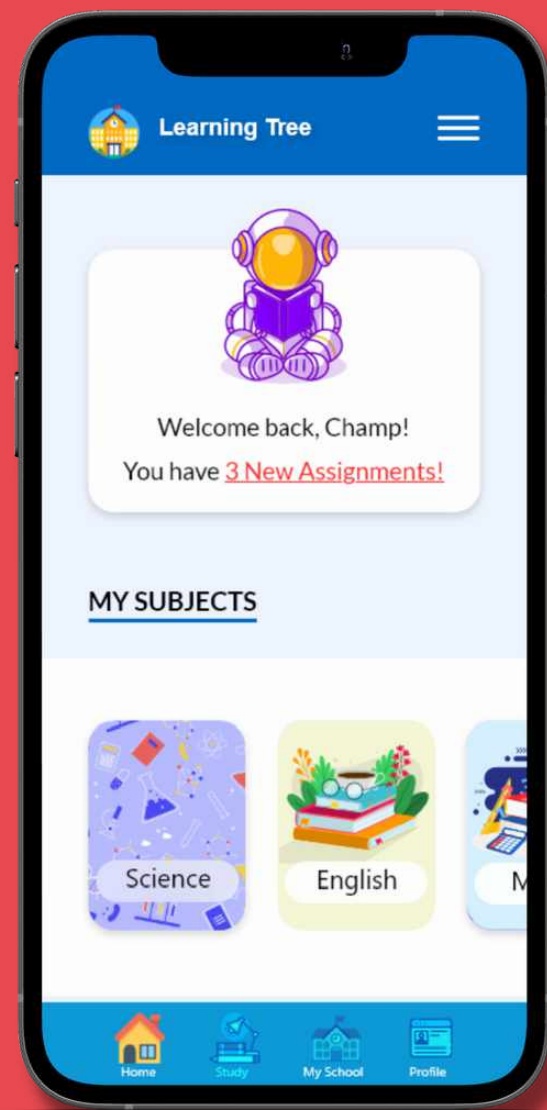
At Ilmtech, we believe there is a better way to use technology for imparting education. A more valuable way where we provide innovative and meaningful learning experiences for students and educators that will really open up avenues of thinking for schools.

We focus on pedagogy. It's one of the least understood and least transparent aspects of a great learning experience, and we see that as an opportunity. We're excited to integrate EdTech for everyone through our software, education, and community.



# Our Products

We build tech products for educational institutions to enhance their systems and improve learning for all

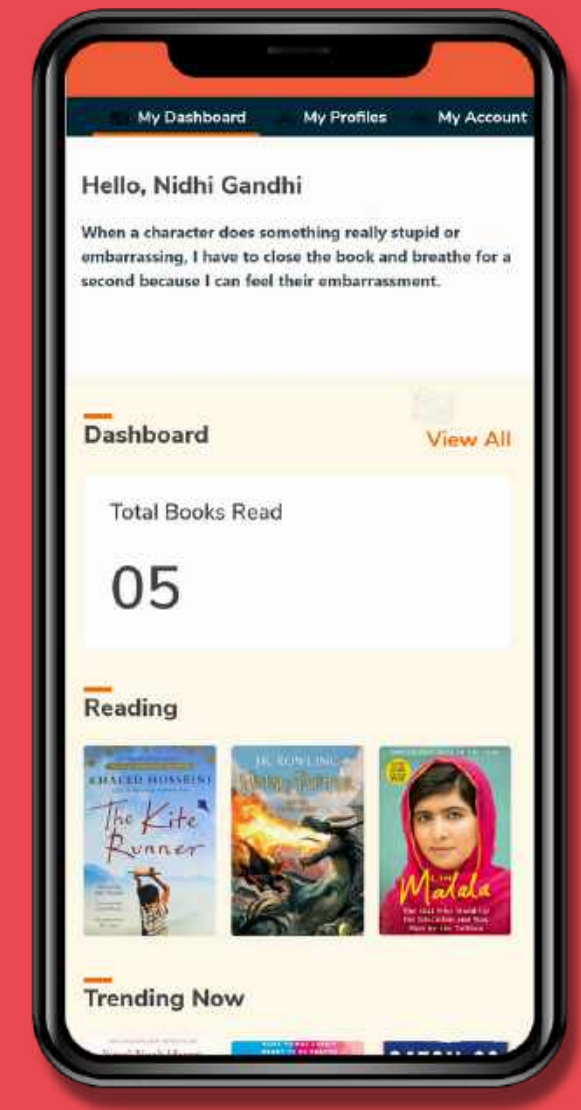


## Edify

Learning Management System

## Bookmark

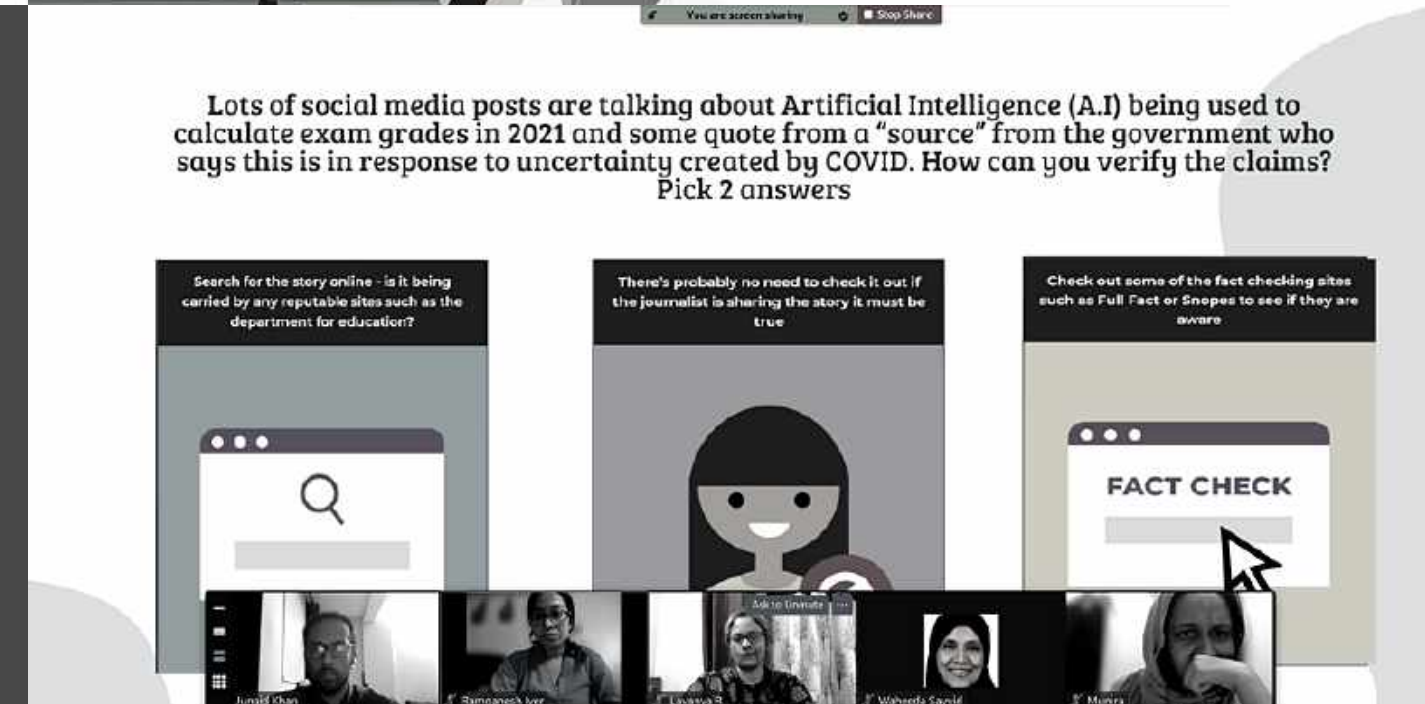
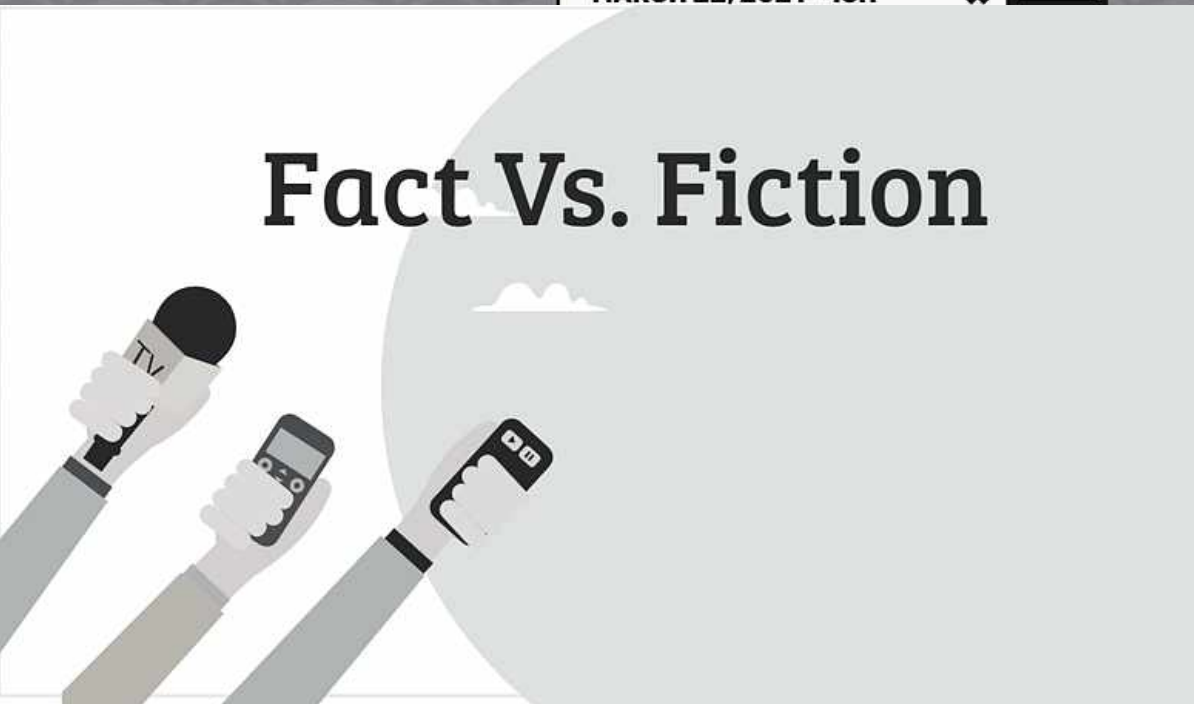
Library Management System





# Educate

We help educate our audience on topics covering everything from online teching, blended learning, study practices, digital literacy, to best learning tools, and more!





# Events

Ilmtech regularly hosts events around the calendar year, often featuring leading academics and experts in the field of education, technology, entertainment, and more!



# Contact Us

Whether you're curious about our products, a webinar, or an event — we're ready to answer any and all questions.

**Website: [www.theilmtech.com](http://www.theilmtech.com)**

**Address: Unit No. 7, The Metro Hospitality,  
Mumbai, Maharashtra 400076**

**Phone: +91-8879382263**

**Email: [junaid@theilmtech.com](mailto:junaid@theilmtech.com)**

